

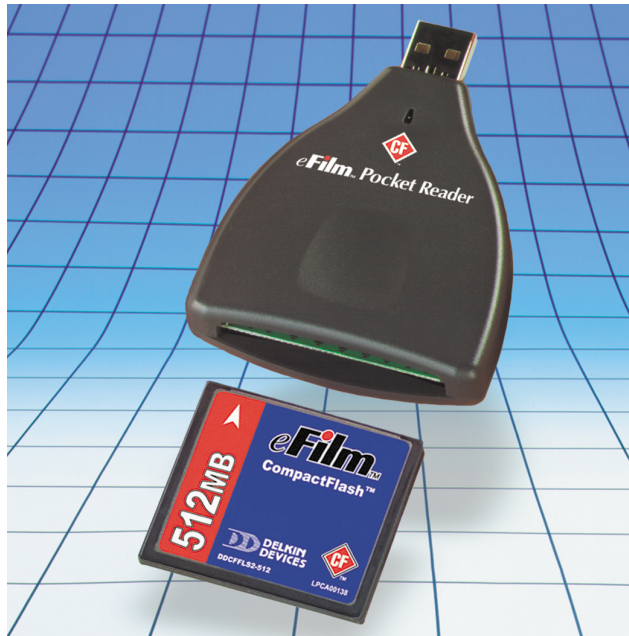
eFilm Pocket Reader - CF

USB Port CompactFlash I/II Reader

User's Manual

*For use with Windows 2000/ME/98,
Windows 95 OSR2.1 (4.00.95b) and Apple Mac OS 8.5+*

NOTE: Please install drivers BEFORE connecting USB plug



Delkin Part No. DDREADER-10

To prevent damage to the module or user, follow these basic handling guidelines

- Do not drop, bend or dismantle the module.
- Keep cool and dry. Avoid exposure to heat or liquids.
- Avoid dust, excessive vibrations and volatile substances.
- Keep away from electromagnetic sources, such as magnets, monitors, speakers and transformers.



© Copyright Delkin Devices, Inc., All rights reserved. No part of this publication may be reproduced in any form, or by any means without prior written permission of Delkin Devices, Inc.

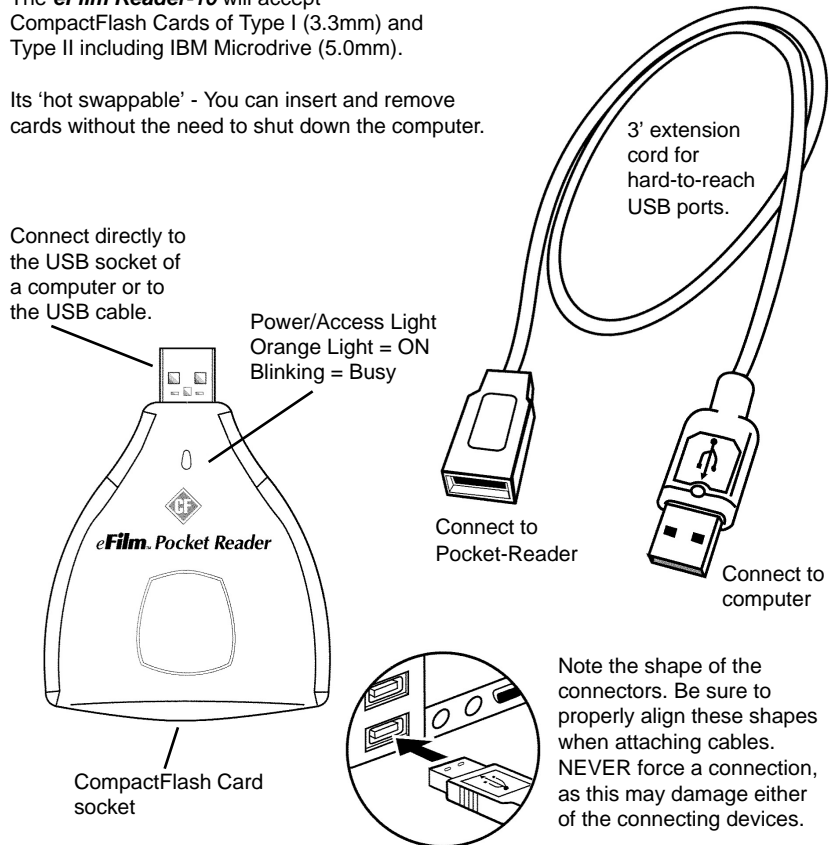
Delkin Devices, and eFilm are registered trademarks of Delkin Devices, Inc. All other brand names, trademarks and part numbers are the property of their respective owners. They are used for identification purposes only, and in no way imply ownership by Delkin Devices.

Table of Contents

Introduction 1
Included Components 1
Driver Software Installation for Windows 2000/ME/98/9 OSR2.1 (4.00.95b) 1
Driver Software Installation for Apple Macintosh 2
Hardware Installation 2
Inserting a CompactFlash Card 3
Basic Operation 3
Removing a CompactFlash Card 3
Formatting a CompactFlash Card 4
Operational Notes 4
Network - Windows Drive Letter Assignment 5
Windows Troubleshooting 6
Macintosh Troubleshooting 7

The **eFilm Reader-10** will accept CompactFlash Cards of Type I (3.3mm) and Type II including IBM Microdrive (5.0mm).

Its 'hot swappable' - You can insert and remove cards without the need to shut down the computer.



Introduction

Thank you and congratulations on your purchase of the eFilm Pocket Reader-CF CompactFlash Card to USB reader/writer. Before you begin use of this product, please take some time to read all instructions and warranty information.

The Pocket Reader-CF is designed to read and write to CompactFlash Cards Type I and II including the IBM™ Microdrive. It is a convenient bridge between your computer and CompactFlash Card compliant devices. The media is accessed the same as a removable drive; in Windows, it will appear as a Removable Disk icon in My Computer, and on a Macintosh it will appear as an icon on the desktop.

Please look to our web site at <http://www.delkin.com> for FAQs and current information on compatibility issues as well as the latest software drivers.

Included Components

- eFilm Pocket Reader
- 3' USB Cable
- Driver CD
- Registration Card
- Manual

System Requirements

IBM compatible desktop or laptop PC

- Windows 2000/ME/98 and Windows 95 OSR 2.1 version 4.03.1214 (4.00.95b)
- USB port

Apple Macintosh desktop or laptop

- MAC OS 8.5+
- USB port

Driver Software Installation Procedure for Windows® 2000/ME/98 & 95 OSR2.1 (4.00.95b)

Before connecting the eFilm Pocket Reader-CF, you must install the device drivers located on the accompanying CD-ROM. Early versions of Windows 95 do not support USB devices, and need to be upgraded. If you are running Win95, you will want to check your system before proceeding.

How to Determine Version of Windows 95 in Use

Windows 95 with OEM Service Release (OSR) 2.1 and 2.5 will recognize eFilm Pocket Reader-CF. In some cases the USB utility will need to be installed from the Win 95 CD. To determine the version of Windows 95 you are running, follow these steps:

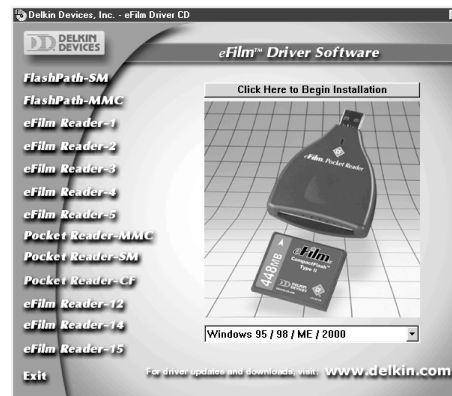
1. Start Windows, then right-click on *My Computer* and select *Properties*.
2. On the General Tab, locate the version number under the System heading.
 - For OSR 2.1, the system will list version 4.03.1214 (4.00.950B).
 - For OSR 2.5, the system will list version 4.03.1214 (4.00.950C).

You can also display the version number in the MS-DOS window by typing "ver" and hit Enter.

Note: OSR 2.0 is also called version B (4.00.950B), but it does not support the eFilm Pocket Reader-CF. The 1214 version number must be present for your system to use the Pocket Reader-CF. If your version is lower (older) than these, you will need to upgrade to Windows 98 for your computer to recognize the eFilm Pocket Reader-CF.

Driver Installation Procedure

1. Start Windows and close any other applications during installation.
2. Insert the Delkin Devices driver CD-ROM. If the CD does not start automatically, double click on the CD-ROM drive in My Computer. The CD will open in a driver installation application. (See Figure 1)
3. Click *Pocket Reader-CF* from the list of products on the left. There is a single installer for all Windows operating systems.
4. Verify that your product matches the one pictured on the screen.
5. Click the button labeled *Click Here to Begin Installation* and follow the on-screen instructions. For best results, allow the drivers to be installed into the default locations.
6. When the *Setup Complete* screen appears, click the *Finish* button.
7. Connect the Pocket Reader-CF to the USB port or hub.
8. You may now insert a Compact Flash Card and access it like other drives by clicking the *Removable Disk* drive icon in *My Computer*.

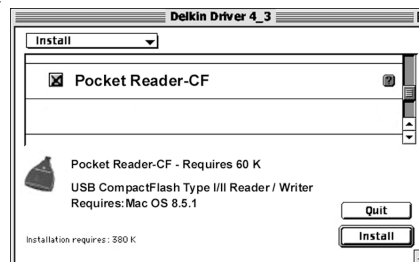


Driver Software Installation Procedure for Apple Macintosh

Before connecting the eFilm Pocket Reader-CF, you must install the device drivers located on the accompanying CD-ROM. To avoid compatibility issues, install only the Pocket Reader-CF driver. Slot or front loading CD-ROMs may not function correctly with a 3" CD disk. For these systems it is recommended that you download the driver from www.delkin.com

Prior to any software installation always ensure you have backed up your hard drive and prepared a recovery disk.

1. Insert the Driver CD-ROM, then double-click on the CD icon when it appears.
2. Select *Pocket Reader-CF* from the product list. (See Figure 2)
3. Click the button labeled *Install* and follow the on-screen instructions. Select *Restart Computer* after installation is complete.



Hardware Installation

After you have installed the drivers, insert the USB plug of the Pocket Reader-CF directly into the USB port of your computer. Or, attach the Reader to the included USB cable and connect the cable plug to the USB port of your computer. Some computer cable configurations may interfere with direct connection option. See inside front cover for illustration.

Inserting a CompactFlash Card

Position the card with the arrow-side up and toward the reader. Insert it gently but firmly into the slot. Be careful to insert the card in the proper direction. Inserting a card up-side down or forcing it may result in damage to the card and/or reader. (See Figure 3)

Basic Operation

Windows

The CompactFlash Card will appear as a drive icon in *My Computer*. It can be accessed the same as a removable hard disk. On some systems, the drive icon will not appear unless a card is installed.

To copy files from your card to your hard disk or vice versa, perform the following steps:

1. Double-click on *My Computer*.
2. Double-click on the *Removable Disk* icon.
3. Simply "drag and drop" folders or individual files to a desired location.

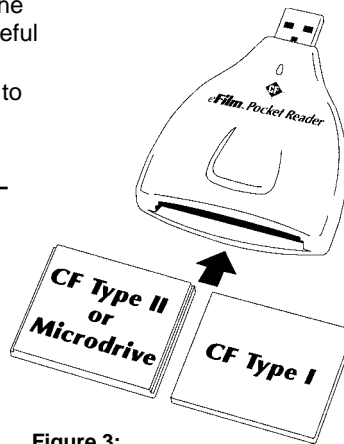


Figure 3:
Inserting a CompactFlash Card

Macintosh

The CompactFlash Card will appear as a drive icon on the desktop. It can be accessed the same as a removable hard disk.

To copy files from your card to your hard disk or vice versa, perform the following steps:

1. Double-click on the icon that appears on the desktop.
2. Hold the Option key down and simply "drag and drop" folders or individual files to a desired location.

Windows and Macintosh users please note the following:

- In order to access file formats such as JPEG, TIFF or MP3, you will need a software program that can open these files. Most digital devices that use specific formats will include software to access the files. Refer to your device manual for more information.
- When transferring files to a common location on your computer, it is recommended that you re-name the files to avoid overwriting previous files. Most cameras simply number the picture files and begin at 001 when a blank card is inserted. This can result in two or more files on your computer having the same name, prompting you to overwrite.

Removing a CompactFlash Card

First close any files residing on the card that are open. This will prevent errors from a program trying to access data on a card no longer in the Reader. On a Macintosh, drag the card icon to Trash before removing the card.

- **DO NOT** remove the CompactFlash Card while files are being accessed or transferred. This could result in loss of data and/or damage to the card.

To remove a CompactFlash Card, simply pull it from the Reader.

Formatting a CompactFlash Card

Although most cards are factory formatted, some cameras and CompactFlash Card devices may require the card to be formatted in the camera or device before initial use. Some devices, such as MP3 players, use a proprietary format that will make the card unrecognizable to the computer or camera. Refer to the device manual for more information. Macintosh users: It is strongly recommended that you DO NOT format or initialize cards with the computer, as the Mac file system is not recognized by most devices and could make the card unreaable by your device. Format cards using the camera or device.

- Formatting a CompactFlash Card will erase all pictures or files on the card.
- Formatting should be performed in the camera or CompactFlash Card device to insure compatibility.
- Formatting should not be used to clear unwanted files from the card.

If you do wish to format a card with a computer, perform the following steps:

1. In *My Computer*, right-click on the appropriate *Removable Disk*.
2. Select *Format* and follow on-screen instructions.

Note: a corrupt or malfunctioning CompactFlash can be reformatted using the CFPREP program located in the Start/Programs/Pocket Reader-CF menu.

Operational Notes

While Delkin eFilm Readers are compatible with the widest possible variety of card brands, computers and operating systems, occasional incompatibilities may arise. The eFilm Pocket Reader-CF is compatible with all CompactFlash™ Cards with a CF logo. The CF logo is the symbol of compliance for all CompactFlash™ Cards that follow the specifications regulated and certified by CFA, Compact-Flash Association (The CF and CFA logos are registered trademarks of the CompactFlash Association).

- A corrupt file on your CompactFlash Card can cause a device failure or system crash when transferring files to your computer. Recovery programs such as Scan-disk can be used to detect and repair most disk errors. It may also be necessary to re-format the card, which will erase all files stored on the card. Some of the causes of file corruption are:
 - > Unsteady power supply while transferring files, such as a low camera battery or improperly connected reader.

- > Card removed from reader or camera, or any other type of interruption while transferring or accessing files.
- > Improperly formatted card.
- Minor malfunctions while using the Pocket Reader-CF, such as system hangs, can usually be resolved by simply re-booting the computer. Serious or recurring malfunctions may require a re-installation of the Pocket Reader-CF drivers.

Compatibility Note: Your new Reader is part of a system of components that must function correctly and compatibly in order to complete the simple process of moving files from your device to your computer. The components involved are the Reader, CompactFlash Device, Camera, Storage Card, Computer (and its numerous components), USB Interface, Software Drivers, and Operating System.

Network Conflicts - Windows® 2000, ME, 98 Drive Letter Assignment

The following procedure may be necessary when installing the e-Film Pocket Reader-CF onto a computer connected to a network. In some cases, the computer may assign the Pocket Reader-CF a drive letter that has already been assigned to another drive, such as a network drive. This usually occurs after re-booting the computer with the Pocket Reader-CF connected. To avoid this conflict, the Pocket Reader-CF can be assigned an available drive letter after you connect it to the computer but before re-booting. For more information, contact your network administrator. If your computer is not connected to a network, and there are no drive letter conflicts, these steps will not be necessary.

Windows ME and 98

1. With the power ON, connect the Pocket Reader-CF to the computers USB port. The Pocket Reader-SM will show up as a removable disk icon in *My Computer*. Also, note the drive letters assigned to any network drives.
2. Right click the *My Computer* icon on the desktop.
3. Select *Properties* from the menu.
4. Click the *Device Manager* tab.
5. Click the plus sign (+) next to *Disk Drives*.
6. From the list of drives, double click *USBAT CompactFlash* to bring up a properties window.
7. Click the *Settings* tab.
8. In the section labeled *Reserved drive letters*; use the arrow to select and assign a *Start drive letter* (the *End drive letter* will change as well). Select a letter that does not conflict with any other drives. This is best accomplished by selecting a letter that is farther down the alphabet than any of your network drives. You will need to re-boot for the changes to take effect.

Windows 2000

The drive letter assigned to the Pocket Reader-CF can be manually assigned through Disk Management, located under Administrative Tools. You must be logged on as System Administrator and a CompactFlash Card must be inserted in the reader before you can make these changes.

Troubleshooting

This is a very basic troubleshooting list. If your problem isn't solved by those listed, Please visit our web site <http://www.delkin.com> for FAQs and current information on compatibility issues as well as the latest software drivers. Or see the back page for contacting Tech Support.

Windows

SYMPTOM	CAUSE	SOLUTION
The "Removable Disk" icon does not appear in the "My Computer" window.	<p>The driver software may not have been properly installed .</p> <p>The reader is not connected properly.</p> <p>The CompactFlash Card is not inserted fully.</p> <p>This OS version does not support USB.</p>	<p>Reinstall from CD or update driver software in Device Manager - specifying the Pocket Reader-CF folder on drive C:\</p> <p>Unplug the reader and plug it back in.</p> <p>Remove and reinsert the card.</p> <p>Upgrade to a newer OS version.</p>
The reader doesn't appear to be powered.	<p>Loose or improper cable connections.</p> <p>Insufficient power from the computer.</p>	<p>Check all cable connections and power cords.</p> <p>Connect the reader directly into the computer's USB socket.</p>
I've just received the dreaded Windows "Blue Screen".	<p>The card has been removed while a file is still open on the card.</p> <p>The card was removed during a read/write operation.</p>	<p>Recover if possible. But more than likely you'll need to restart Windows.</p> <p>Wait 5 to 10 seconds after any activity before removing the card. To avoid problems, you can copy the data to the hard drive before accessing it.</p>

Apple Macintosh

SYMPTOM	CAUSE	SOLUTION
The "Removable Disk" icon does not appear on my desktop.	<p>The driver software may not have been properly installed .</p> <p>The reader is not connected properly.</p> <p>The CompactFlash Card is not inserted fully.</p>	<p>Reinstall from CD or download driver from www.delkin.com</p> <p>Unplug the reader and plug it back in.</p> <p>A CompactFlash Card must be inserted in order for an icon to appear on the desktop.</p>
An error message appears during driver installation.	Possibly a conflict with another driver or program.	Try installing the drivers with extensions off (hold the shift key down during boot-up).
After downloading files, the file icons disappear when the card is removed.	The files were not copied to the hard drive.	The Option key must be held down while copying files to the computer. Otherwise, only the icons are placed on the hard drive.

Test Drive Your Equipment

We advise that you put all of your equipment through a dry run before transferring important or irreplaceable files. This will not only insure that your equipment is functioning, but will also familiarize you with the transfer process.

Copy a few files to the CompactFlash Card using your CompactFlash Device. Then insert the card into the Reader and use the transfer method you are most comfortable with – drag and drop, copy and paste, etc. Some devices, such as MP3 players, require third party software to access files. Refer to the device manual for information. Once the files are stored on your hard drive, access them one at a time and check that they are to your satisfaction. Experiment until you are happy with the results and comfortable with the process. Then you can simply delete the test files from the card to return it to its original state.

Specifications

DD MFG Part Number: DDREADER-10

Compatible Cards: CompactFlash Type I and Type II, and
CF+ Microdrive.

Compatible OS: Windows 2000/ME/98/95-OSR2.1(4.00.95b)
Apple Mac OS 8.5.1+

Host Interface: USB (Universal Serial Bus) port

Transfer Rate: Up to 900 KB/s sustained Read, 470 KB/s
sustained Write

Power Consumption: 90mA typical (47mA w/o media)

EMI/RFI Rad Limits: Class B

Dimensions: 65mm (W) x 100mm (L) x 18mm (H)

Weight: ~22.5g

Operational Environment: Temp: 0-60°C
Shock: 2000 Gs maximum
Humidity: 5% to 96% (non-condensing)

FIVE YEAR PRODUCT WARRANTY

Delkin Devices, Inc. (DDI) warrants that this product has been thoroughly tested and is free from defects in material and workmanship. This warranty is expressly limited to product repair, modification, or replacement, at the sole discretion of DDI. The maximum liability for any aspect of this warranty will be limited to an amount not exceeding the original product purchase price.

This warranty is contingent upon proper use of the product in the application for which it is intended and does not cover any product that has been modified, mis-used, neglected or subjected to unusual physical stress. DDI will not repair or replace products that fail solely because their estimated 'life' has expired.

The defective product must be returned to DDI. All shipping costs/ shall be the responsibility of the purchaser. State and local laws may apply.

You will need a Return Merchandise Authorization (RMA) number before you return the product. Please contact DDI for assistance in getting an RMA number.

Disclaimer

Except as provided herein, there are no express or implied warranties of merchantability or fitness for a particular purpose. Under no circumstances will DDI be liable in any way for any damages, including but not limited to lost revenue, lost wages, or any other incidental or consequential damages arising from the use of or inability to use this product.

The warranty set forth above is exclusive and no other warranty, whether written or oral, is expressed or implied.

Delkin reserves the right to change specifications of hardware, software and instructions without notice.

Delkin Devices does not extend warranty to batteries. If batteries are supplied with the product, it is as a convenience only, and as such, are covered by the battery manufacturer's warranty.

100% COMPATIBLE GUARANTEE

All Delkin Devices products are 100% guaranteed compatible with OEM machines for which they are designed.

TECHNICAL SUPPORT

Delkin Devices can provide technical assistance with installation of a Delkin Devices product. Any phone/e-mail charges are the responsibility of the purchaser.

CONTACTING DELKIN DEVICES

For Technical Support or Warranty information you can contact Delkin Devices by:

- phone at 858-391-1234 (9:00AM to 5:00PM PST Mon-Fri)
- e-mail at ddtech@delkin.com.
- on the web at <http://www.delkin.com>